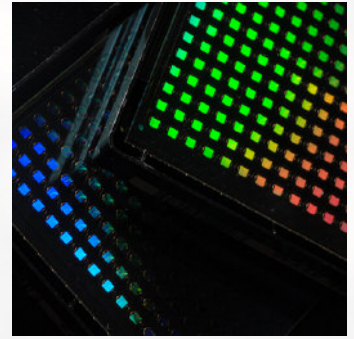


# Fast. Cost Effective. Accessible.

## Corning® Epic® Label-free Screening Services

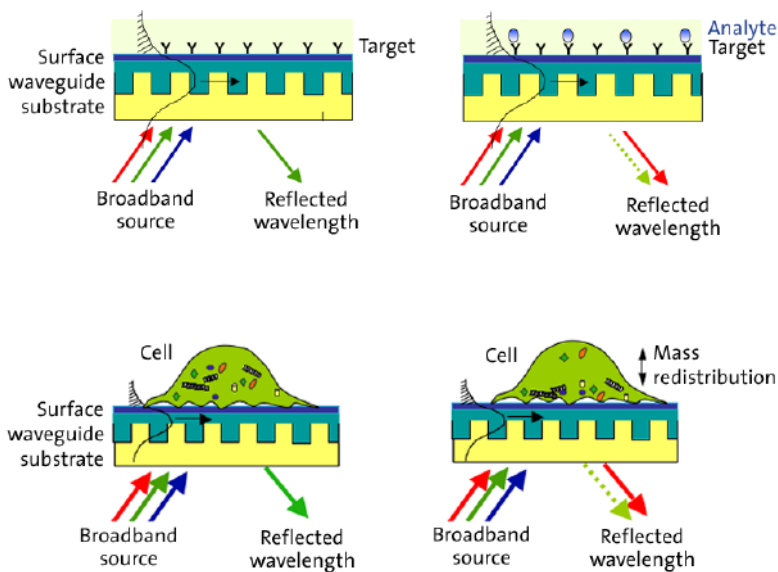


### Do You Have:

- ▶ Too many projects and not enough resources?
- ▶ No access to label-free assay formats?
- ▶ A requirement for fast turnaround on data?
- ▶ Issues with your current assays?
- ▶ An outsourcing budget?

### ...then choose Corning Epic Services

- ▶ Access to label-free equipment
- ▶ Utilize the label-free experience of our Applications Group
- ▶ Full data interpretation service
- ▶ Confidential work performed under NDA



Corning Epic Label-free Technology – Principle of Operation

### Corning offers:

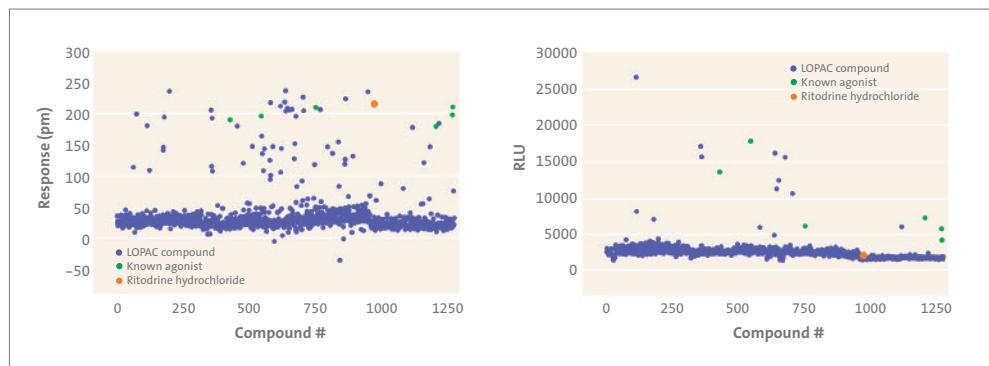
- ▶ Proof of Concept
- ▶ Full Assay Development and *screening ready* protocols available for existing customers
- ▶ Screening and Hit Confirmation – *any* number of compounds
- ▶ Pathway deconvolution and toxin studies as applicable
- ▶ Corning Integrative Pharmacology (CIP) profiling services

CORNING

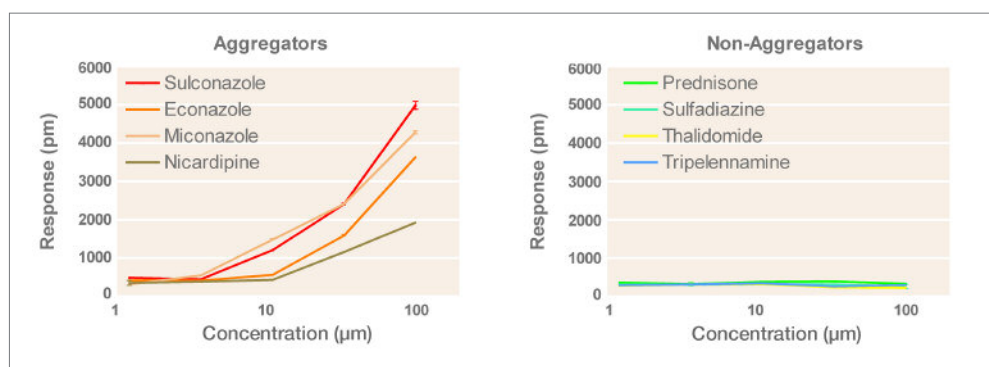
Epic<sup>®</sup>  
technology

## Available assays include but are not limited to:

### Cell-based Screening Assays



### Compound/protein Aggregation



### Other Cell-based Assays:

- ▶ GPCRs
- ▶ RTKs
- ▶ Ion channels – ligand-gated and voltage-gated
- ▶ Toll-like Receptors (TLRs)
- ▶ Transporters
- ▶ Pathway analysis
- ▶ Safety assessment – cardiotoxicity, other toxin studies
- ▶ Chemotaxis
- ▶ Primary and endogenous cells

### Other Biochemistry-based Assays:

- ▶ Fragment-based drug discovery screening
- ▶ Protein – small molecule
- ▶ Enzyme targets – kinases, proteases
- ▶ Epigenetics assays
- ▶ Protein – protein/Peptide/Antibody
- ▶ Antibody/hybridoma screening and epitope mapping

Visit our video library at [www.corning.com/epic](http://www.corning.com/epic)

## Contact Corning now!

For a confidential consultation on project costs, timing and targets, please contact [epic@corning.com](mailto:epic@corning.com)

# CORNING

Corning Incorporated  
Life Sciences

Tower 2, 4th Floor  
900 Chelmsford St.  
Lowell, MA 01851  
t 800.492.1110  
t 978.442.2200  
f 978.442.2476

[www.corning.com/lifesciences](http://www.corning.com/lifesciences)